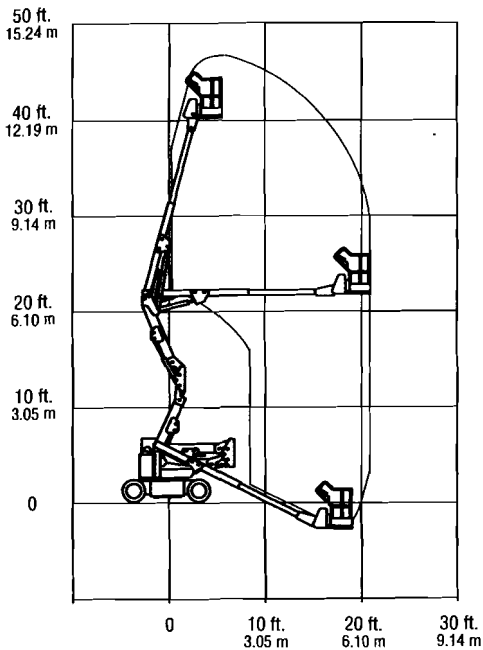
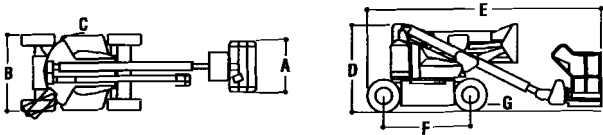


40ic



REACH SPECIFICATIONS

Platform Height40 ft. (12.2 m)
Horizontal Outreach20 ft. 6 in. (6.25 m)
Up and Over Clearance20 ft. (6.1 m)
Swing360 (non-continuous)
Platform Capacity500 lbs. (227 kg)
Platform Rotator110 hydraulic



DIMENSIONAL DATA

A. Platform Size26 x 48 in. (0.66 x 1.22 m)
B. Overall Width5 ft. 9 in. (1.75 m)
C. Tailswing (working condition)zero
D. Stowed Height6 ft. 7 in. (2.0 m)
E. Stowed Length17 ft. 7 in. (5.36 m)
F. Wheelbase6 ft. 7 in. (2.0 m)
G. Ground Clearance5 3/8 in. (13.7 cm)
Gross Vehicle Weight10,700 lbs. (4,853 kg)

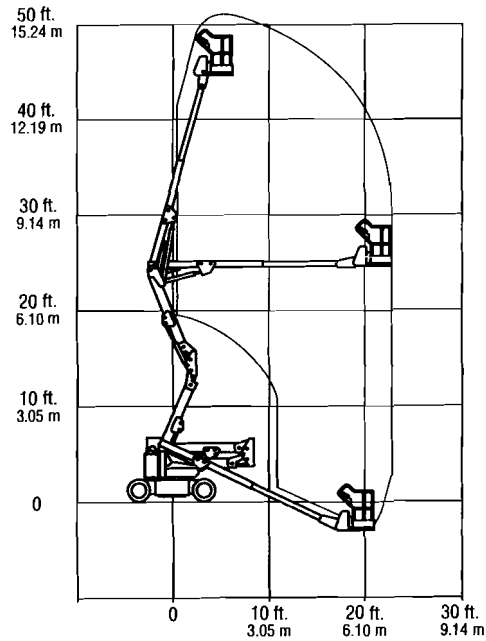
CHASSIS

Drive Speed3.5 mph (5.6 kph)
Gradeability25%
Tirespneumatic 225/75R15
Axle Oscillation1 in. (2.5 cm)
Turning Radius (inside)6 ft. 1 in. (1.85 m)
Turning Radius (outside)13 ft. 3 in. (4.04 m)

POWER SOURCE

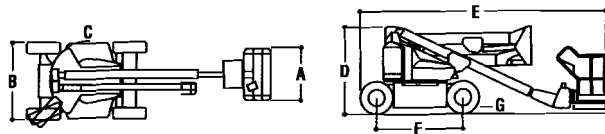
Gasoline and Dual Fuel Engine21 hp B&S/D Vanguard
Diesel Engine22 hp Yanmar
Fuel Tank Capacity7.8 gal. (29.5 L)
Hydraulic Reservoir Capacity13.8 gal. (52.2 L)
Auxiliary Power12V DC motor/gear pump
Manual LoweringLever-actuated hand pump

45ic



REACH SPECIFICATIONS

Platform Height45 ft. (13.7 m)
Horizontal Outreach22 ft. 8 in. (6.91 m)
Up and Over Clearance24 ft. 7 in. (7.49 m)
Swing360 (non-continuous)
Platform Capacity500 lbs. (227 kg)
Platform Rotator110 hydraulic



DIMENSIONAL DATA

A. Platform Size26 x 48 in. (0.66 x 1.22 m)
B. Overall Width5 ft. 9 in. (1.75 m)
C. Tailswing (working condition)zero
D. Stowed Height6 ft. 7 in. (2.0 m)
E. Stowed Length18 ft. 8 in. (5.69 m)
F. Wheelbase6 ft. 7 in. (2.0 m)
G. Ground Clearance5 3/8 in. (13.7 cm)
Gross Vehicle Weight11,800 lbs. (5,352 kg)

CHASSIS

Drive Speed3.5 mph (5.6 kph)
Gradeability25%
Tirespneumatic 215/85R16
Axle Oscillation1 in. (2.5 cm)
Turning Radius (inside)6 ft. 1 in. (1.85 m)
Turning Radius (outside)13 ft. 3 in. (4.04 m)

POWER SOURCE

Gasoline and Dual Fuel Engine21 hp B&S/D Vanguard
Diesel Engine22 hp Yanmar
Fuel Tank Capacity7.8 gal. (29.5L)
Hydraulic Reservoir Capacity13.8 gal. (52.2L)
Auxiliary Power12V DC motor/gear pump
Manual LoweringLever-actuated hand pump