

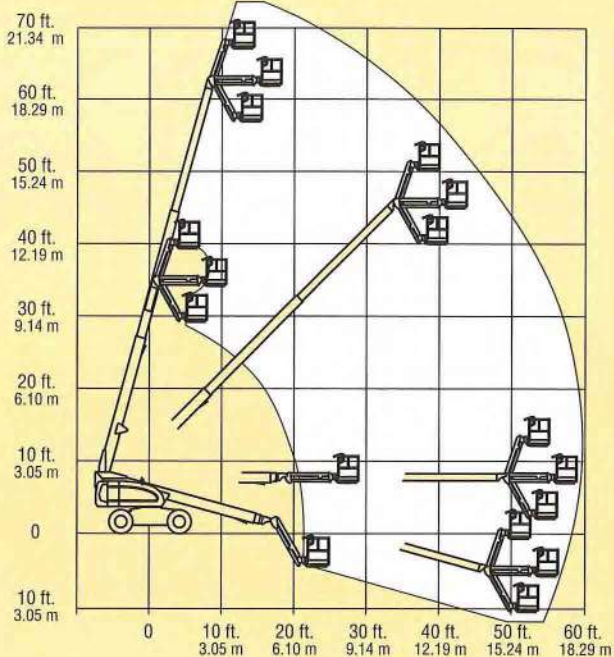
600 SERIES TELESCOPIC BOOM LIFTS



600S, 600SJ & 660SJ

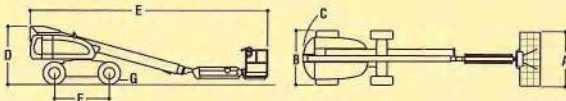


JLG 660SJ



REACH SPECIFICATIONS

Platform Height66 ft. (20.12 m)
Horizontal Outreach56 ft. 9 in. (17.3 m)
Swing360 degrees continuous
Platform Capacity—Restricted500 lbs. (227 kg)
Platform Capacity—Unrestricted500 lbs. (227 kg)
Platform Rotator180 degrees hydraulic
Jib (Range of Articulation)130 degrees (+70, -60)



DIMENSIONAL DATA

A. Platform Size36 in. x 72 in. (0.91 m x 1.83 m)
B. Overall Width7 ft. 11-1/2 in. (2.42 m)
C. Tailswing (working condition)3 ft. 9 in. (1.14 m)
D. Stowed Height8 ft. 4-3/4 in. (2.55 m)
E. Stowed Length33 ft. 6 in. (10.21 m)
F. Wheelbase8 ft. 1-1/2 in. (2.48 m)
G. Ground Clearance12 in. (30.48 cm)
Gross Vehicle Weight**25,500 lbs. (11,567 kg)
Max. Ground Bearing Pressure64 psi (29 kg/cm ²)
Max. Tyre Load13,200 lbs. (5,986 kg)

CHASSIS

Drive Speed 2WD4.5 MPH (7.2 km/h)
Drive Speed 4WD4 MPH (6.4 km/h)
Gradeability 2WD30%
Gradeability 4WD45%
Tyres***pneumatic, 15 x 19.5
Axle Oscillation (optional)8 in. (20.32 cm)
Turning Radius, (Inside/Outside)	
660SJ 2WS12 ft. (3.66 m)/17 ft. 9 in. (5.41 m)
660SJ 4WS5 ft. 5 in. (1.65 m)/11 ft. 4 in. (3.54 m)

POWER SOURCE

Gasoline Engine, Ford LRG-42366 hp (49.2 kw)
Diesel Engine, Deutz F4M1011E65 hp (48.5 kw)
Diesel Engine, Continental TMD2766.5 hp (49.6 kw)
Fuel Tank Capacity39 gallons (147.6 L)
Hydraulic Reservoir31 gallons (117.3 L)
Auxiliary Power12V DC

** May vary dependent on regional requirements.

*** Foam filled tyres required to comply with European regulations.

Specifications may change to meet country standards or with the addition of optional equipment.

PERFORMANCE FEATURES



Controls Designed for Ease of Operation

Platform Control Console. Layout of controls and a 40% reduction in the number of switches and levers provides ease of operation and reduces the time required for operator training. Durable cast aluminum console box is shaped for operator convenience and provides added protection against damage to internal components. One-hand drive and steer provides optimum travel control, while one-hand control of lift and swing provides for more efficient and more accurate positioning of the basket to the elevated work location. A console light panel informs the operator of various condition sensors such as fuel level, engine or filter distress, platform capacity, tilt warning, and function enable status. Easy-to-replace console decals feature large, colourful, easy-to-identify graphic symbols.



Ground Control Console.

Ground control console features three-dimensional decal. A detailed light panel provides status of specified machine conditions, including various self diagnostic maintenance sensors. Ground control console is conveniently located at eye level.



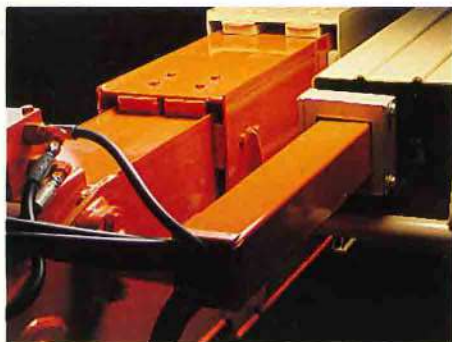
Improved Platform Designed for Ease of Repair and Operator Convenience

Rugged platform design features high strength* square tube steel railing. Constructed of five individually replaceable sections, the entire platform, or just a single section, can be readily replaced. Low mounting of the platform to the boom nose reduces underhanging components which could cause damage to sensitive objects such as an aircraft fuselage. Reduced ground level step-in entry heights and a swinging platform gate permit ease of entry and exit while carrying tools. Sealed hydraulic platform rotator features 180 degrees** range of motion. Dual capacity rating of 500 lbs. (227 kg) unrestricted and 1000 lbs. (454 kg) restricted (under ANSI A92.5 in USA only) permits increased job site efficiency.

* 50,000 psi yield strength steel alloy.

** 160 degrees on model 600S.

PERFORMANCE FEATURES



Advanced Boom Design Features a Covered Power Track

Constructed of high yield strength steel*, the boom features a larger cross sectional area to improve resistance to deflection. Telescoping mid-section and fly-section feature fully synchronized cable extend system with corrosion resistant composite sheaves. Boom wear pads, cables, sheaves, pins, and bearings require no lubrication. Improved wear pad design provides much larger bearing surfaces and longer service life, with external access to shimming for adjustment. A one-piece composite material cover provides added protection against damage to the power track, hoses, and cables.

*100,000 psi yield strength steel alloy.



Turntable Designed for Ease of Service

Gull-wing hoods are constructed of non-corroding composite material and provide full access to all engine components. Swing-out engine tray provides full access to both sides of the engine, allowing service personnel to work in a convenient, walk-in position. A modular valve manifold consolidates all hydraulic valves and service ports to one location. Convenient access is provided to fuel and hydraulic oil fill ports. All air and oil filters are readily accessible. Bolt-in swing drive system provides ease of backlash adjustment.

Improved Articulating Jib Available on Two Models

Models 600SJ and 660SJ feature new and improved articulating jibs. A wider range of motion (+60 degrees to -70 degrees relative to the main boom) permits greater reach versatility in the immediate vicinity of the elevated work site. The new articulating jib is compatible with both 36 x 72 in. (0.9 x 1.83 m) and 36 x 96 in. (0.9 x 2.44 m) platforms.



Improved Oscillating Axle Option

Lock-out of the oscillating axle cylinders to form a rigid chassis does not occur until the super-structure swings 40 degrees either side of center line; an improvement from 10 degrees on previous models.



Available Options*

36 in. x 96 in. (0.91 m x 2.44 m) Platform, Work Lights, 1/2 in. (13 mm) Air Line To Platform, "Soft Touch" System 72 in./96 in. Platforms, Welding Leads, Oxy-acetylene Lines, 4-Wheel Drive, 4-Wheel Steer, Oscillating Front Axle, Foam-filled Tyres, 2500 W Generator, Head And Tail Lights, Tow Package, Wheel Covers, 5 Degree Tilt Alarm, Travel Alarm, All Motion Alarm, Flashing Amber Beacon, Alarm Package, Deutz F4M-1011E, 65 hp Diesel, Continental TMD-27 66.5 hp Diesel, Dual Fuel, 43.5 Propane Tank, Cold Weather Start Kit, Hostile Environment Kit, Crank-out Engine Tray, EN280 European Package.

*Some options are not available on all models, and other restrictions or conditions may apply. Please consult the 600 Series Price List for details.

Standard Features

36 in. x 72 in. (0.91 m x 1.83 m) Low Mount Platform, Dual Rated Capacity 500-1000 lbs. (227-454 kg)*** On Non-jib Models. Inward Swinging Gate, *180 Degrees Sealed Helical Rotator, **Platform Indicator Light Panel, 110V-AC Receptacle In The Platform, 5 Degree Tilt Indicator, 15 x 19.5 Traction Tread Tyres, 6 ft. (1.8 m) Articulating Jib (600SJ & 660SJ), Swing-out Engine Module, 12V-DC Auxiliary Power, Hourmeter, Manual Descent, Hydrostatic Transmission, 66 hp (49.24 kw) Water-cooled Ford LRG-423 Gasoline Engine, System Distress Warning Light, Full Proportional Controls, Positive Traction, Adjustable Swing Drive, Gull-wing Fibreglass Hoods, Fibreglass Power Track Cover.

* 160 Degrees On The 600S.

** Provides Indicator Lights for System Distress, Low Fuel, 5 Degree Tilt, Capacity Indicator, And Footswitch.

*** ANSI A92.5-1992 in USA only.

The JLG "1 & 5" Warranty

JLG Industries, Inc. backs our products with our exclusive "1 & 5" Warranty.

We provide coverage on all products for one (1) full year, and cover all specified major structural components for five (5) full years.

This warranty represents our commitment to superior quality and manufacturing standards and underscores our pledge of being, "The Provider of Choice Worldwide for Access and Material Handling Equipment."

Due to continuous product improvements, we reserve the right to make specification and/or equipment changes without prior notification.

This machine meets or exceeds applicable OSHA Regulations in 29 CFR 1910.67, 1926.451, (f) 29 CFR 1926.556, ANSI A92.5-1992, as originally manufactured for intended applications.



JLG Industries (Europe)

A Division of JLG Industries, Inc.

Westfield, Cumbernauld,

G68 9HD, Scotland

Tel: (01236) 721133

Fax: (01236) 731342

